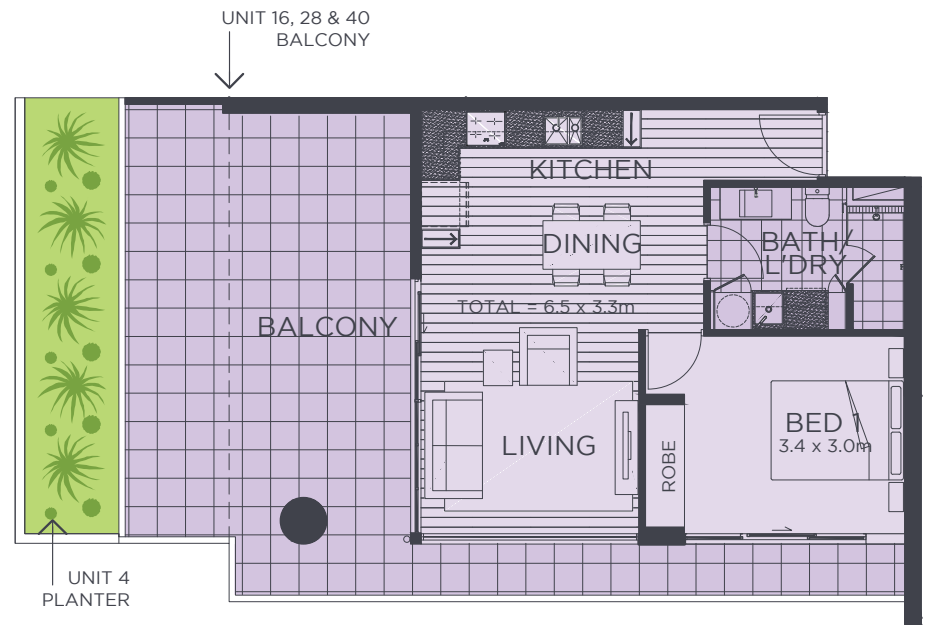
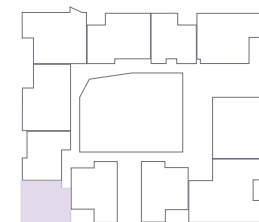


TYPE

C



| | | | | |
|----------------|------------------|------------------|------------------|------------------|
| APARTMENT NO | 4 | 16 | 28 | 40 |
| LEVEL | 2 | 3 | 4 | 5 |
| APARTMENT AREA | 52m ² | 52m ² | 52m ² | 52m ² |
| BALCONY AREA | 38m ² | 26m ² | 26m ² | 25m ² |
| STORAGE | 4m ² | 6m ² | 4m ² | 4m ² |
| CAR BAYS | 1 | 1 | 1 | 1 |
| PLANTER AREA | 10m ² | | | |



GENERAL NOTES: 1. The apartment areas shown here are approximate and are measured to:- the outside face of external walls. - The outside face of walls between apartment and lobby. - The middle of party walls. 2. These area measurements are architectural measurements as defined in the contract conditions and are different from survey dimensions also defined in the contract conditions. 3. Shape and configuration of balconies, doors, windows, ducts and columns may differ from those illustrated. 4. Refer to detailed apartment layouts included in the sales contract documents for variations to layout and balconies.

